

Schedule the entire inspection in **one text message!**

To SCHEDULE, text:

S *Permit Number* *Inspection Code*

S PBGT24-0065 100

To CANCEL, text:

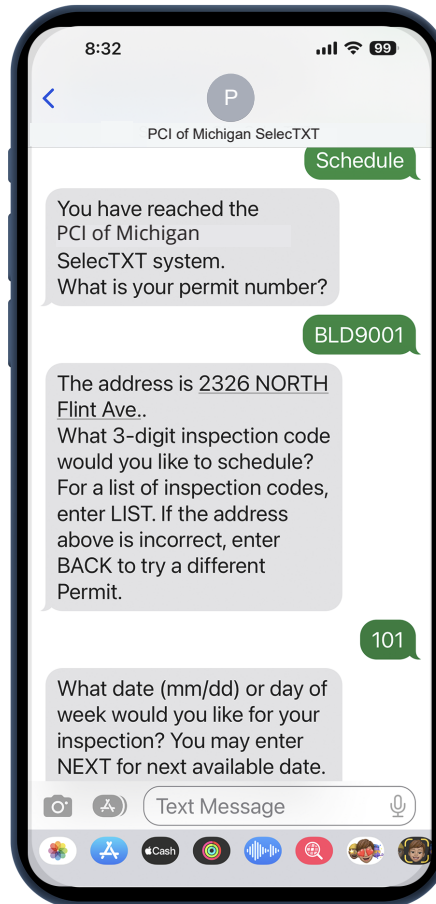
C *Permit Number* *Inspection Code*

C PBGT24-0065 100

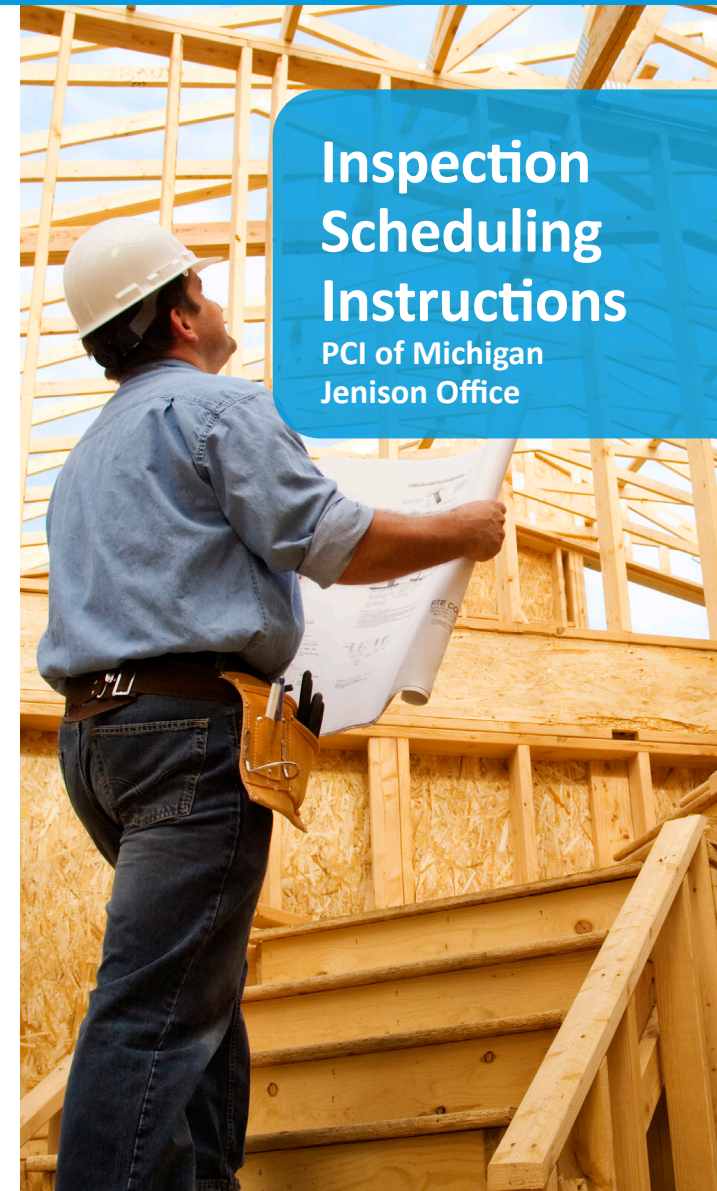
To CHECK RESULTS, text:

R *Permit Number* *Inspection Code*

R PBGT24-0065 100



*PCI of Michigan
Jenison Office
1913 Baldwin St
Jenison, MI 49428*



Inspection Codes

BUILDING

- 101 FOUNDATION
- 102 ROUGH - BUILDING
- 103 FINAL - BUILDING
- 104 MISC - BUILDING
- 105 PARTIAL ROUGH - BUILDING
- 106 PARTIAL FINAL - BUILDING
- 107 ABOVE CEILING - BUILDING

ELECTRICAL

- 201 SERVICE
- 202 SERVICE/FINAL
- 203 TEMP SERVICE
- 204 UFER
- 205 UNDERGROUND - ELECTRICAL
- 206 ROUGH - ELECTRICAL
- 207 FINAL - ELECTRICAL
- 208 PARTIAL ROUGH - ELECTRICAL
- 209 PARTIAL FINAL - ELECTRICAL
- 210 ABOVE CEILING - ELECTRICAL
- 211 POOL BONDING

MECHANICAL

- 301 UNDERGROUND - MECHANICAL
- 302 GAS PRESSURE TEST
- 303 ROUGH - MECHANICAL
- 304 FINAL - MECHANICAL
- 305 PARTIAL ROUGH - MECHANICAL
- 306 PARTIAL FINAL - MECHANICAL
- 307 ABOVE CEILING - MECHANICAL

PLUMBING

- 401 SEWER/WATER SERVICE
- 402 UNDERGROUND - PLUMBING
- 403 ROUGH - PLUMBING
- 404 FINAL - PLUMBING
- 405 PARTIAL ROUGH - PLUMBING
- 406 PARTIAL FINAL - PLUMBING
- 407 ABOVE CEILING - PLUMBING



How it Works

- 1 Text one of the following commands:

"SCHEDULE"
to schedule an inspection

"RESCHEDULE"
to reschedule an inspection

"CANCEL"
to cancel an inspection

"RESULTS"
to obtain inspection results

- 2 Send it to **(844) 814-2389** to opt in to receiving messages and begin scheduling.
- 3 Follow the interactive prompts for entering your permit number and inspection code.

PCI

PROFESSIONAL
CODE INSPECTIONS

Need further assistance?

Call the Jenison Office at (616) 667-8803

Note: SelectTXT will only text you if you initiate a conversation. Text the word STOP to opt-out of receiving messages at any time.